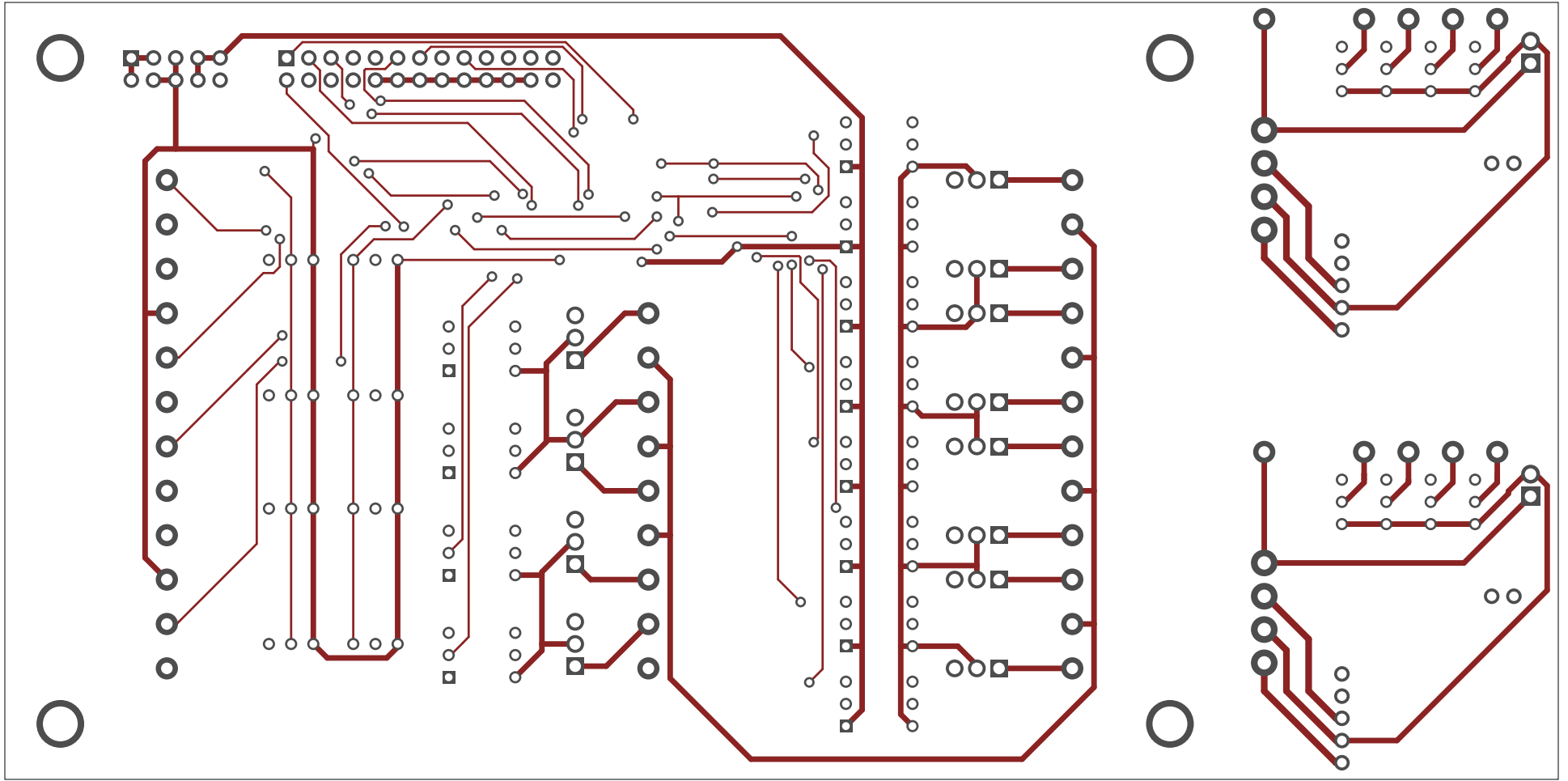
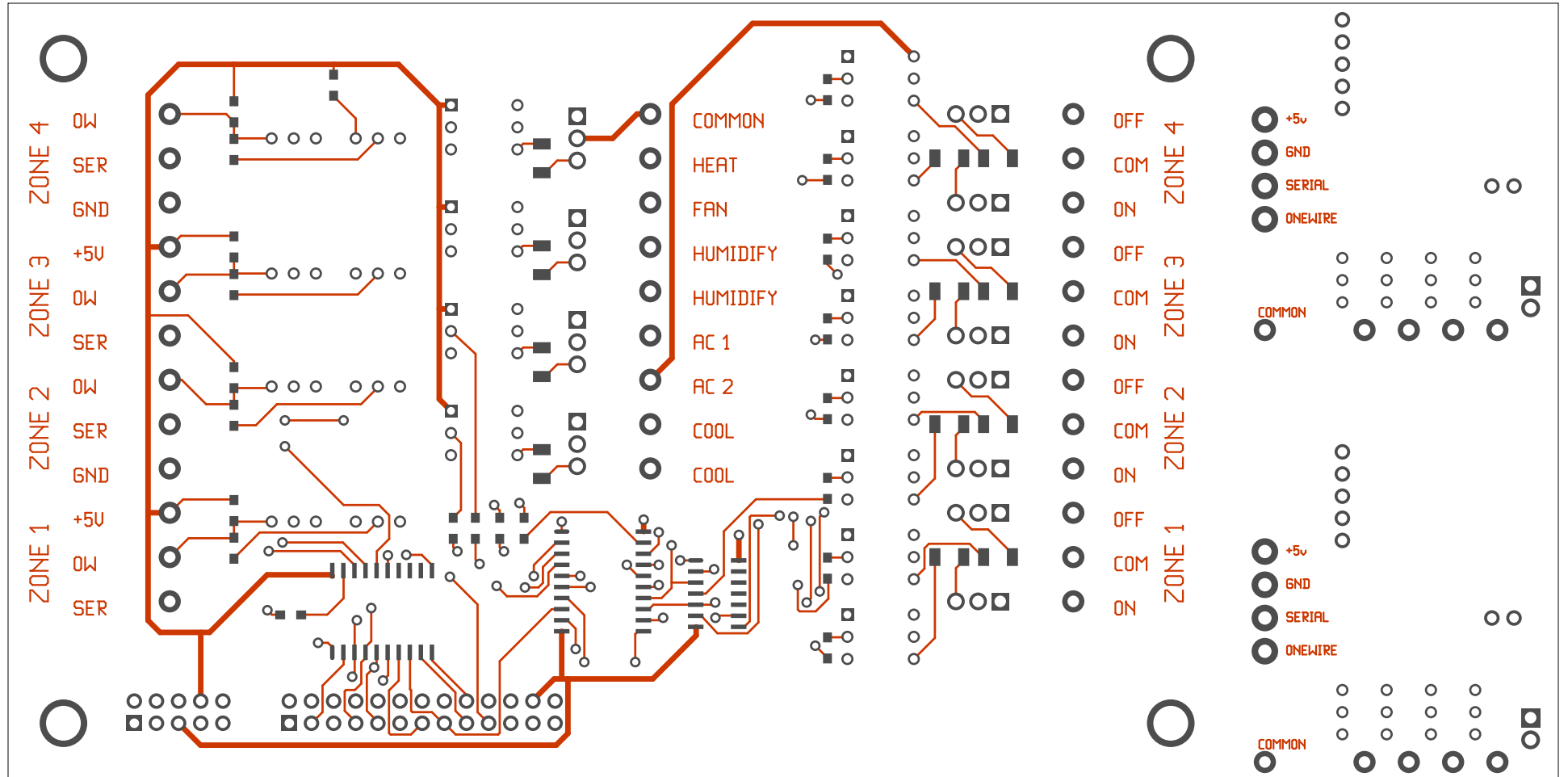


2. solder
3. component
4. unused
5. componentmask
6. soldermask
7. drill
8. topsilk
9. bottomsilk
10. topassembly
11. bottomassembly
12. fab

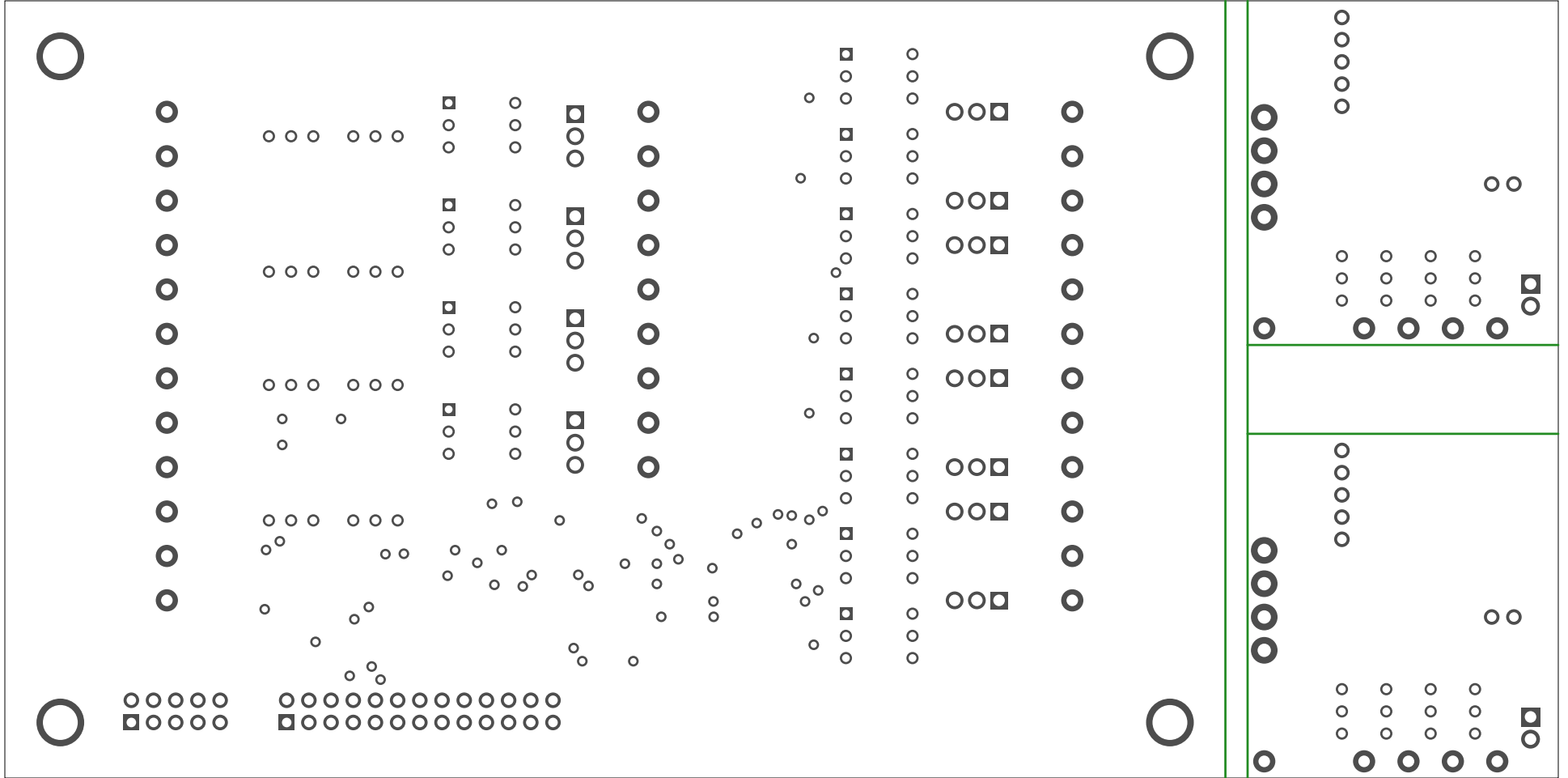


Layer solder

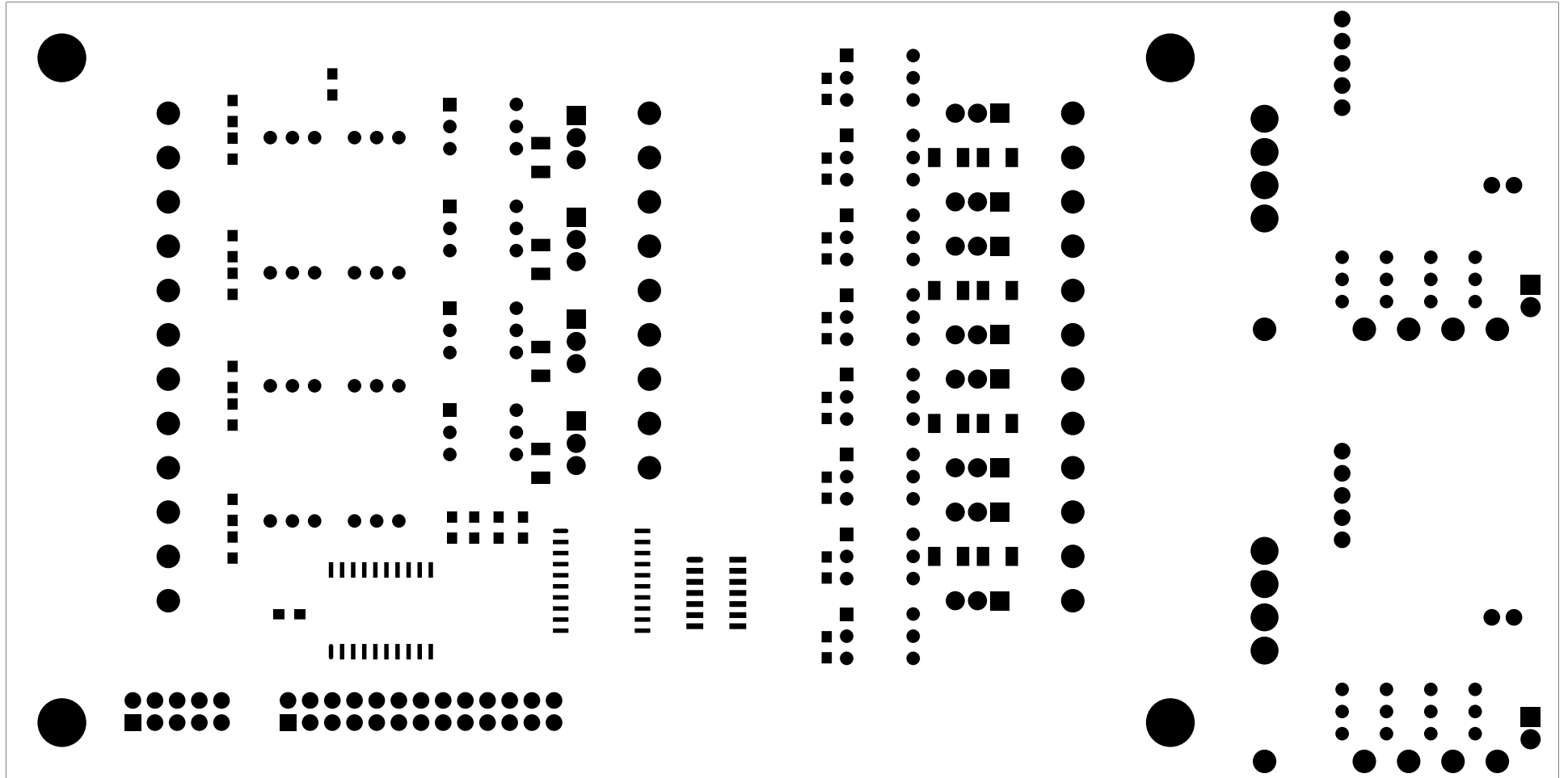
Layer component

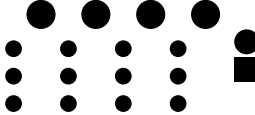
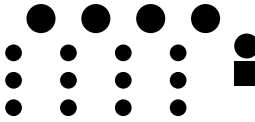
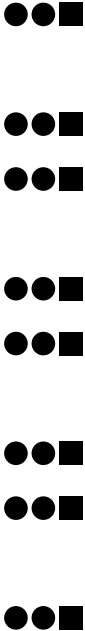
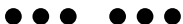
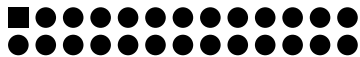
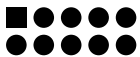


Layer unused

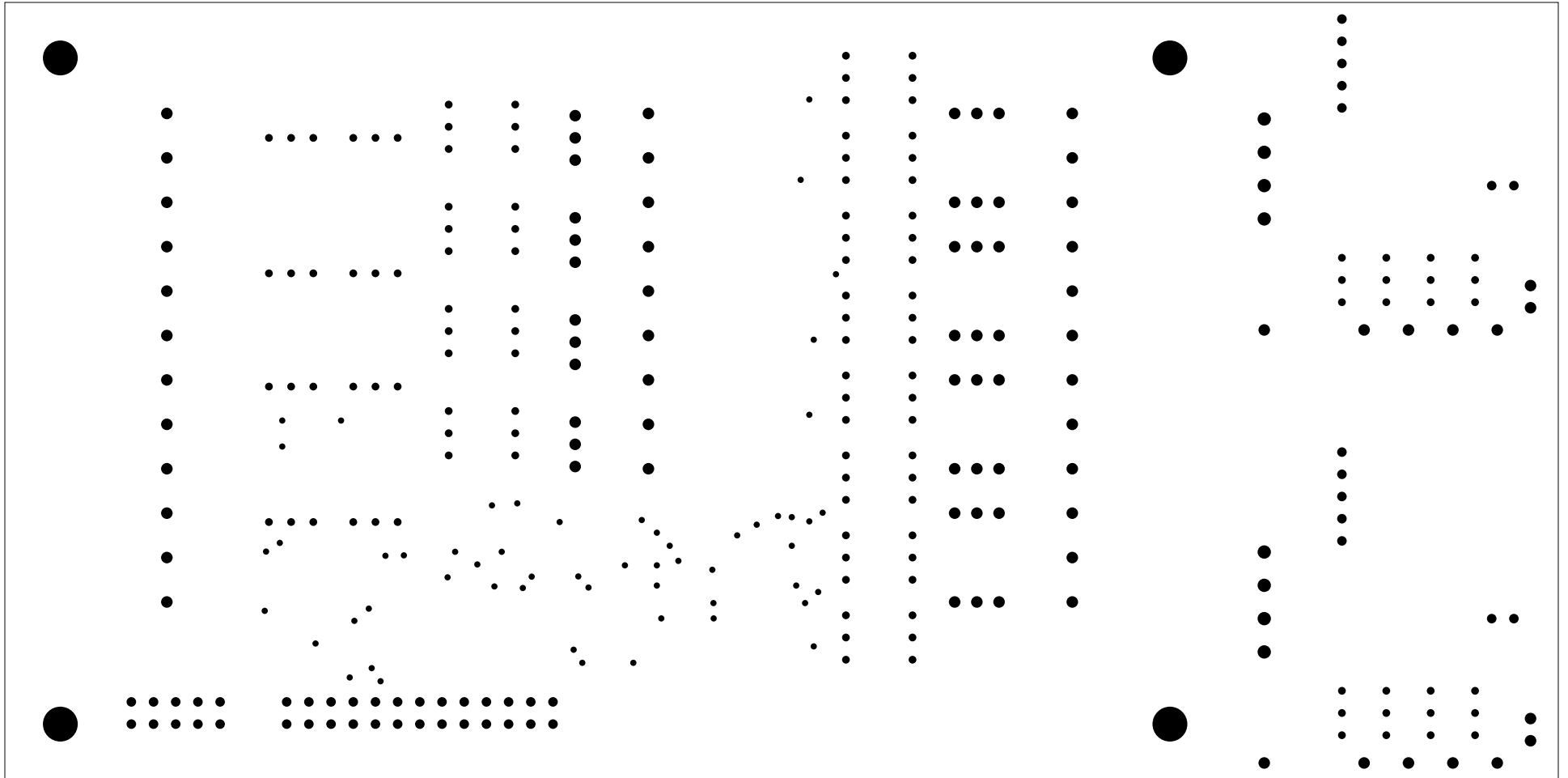


Layer componentmask

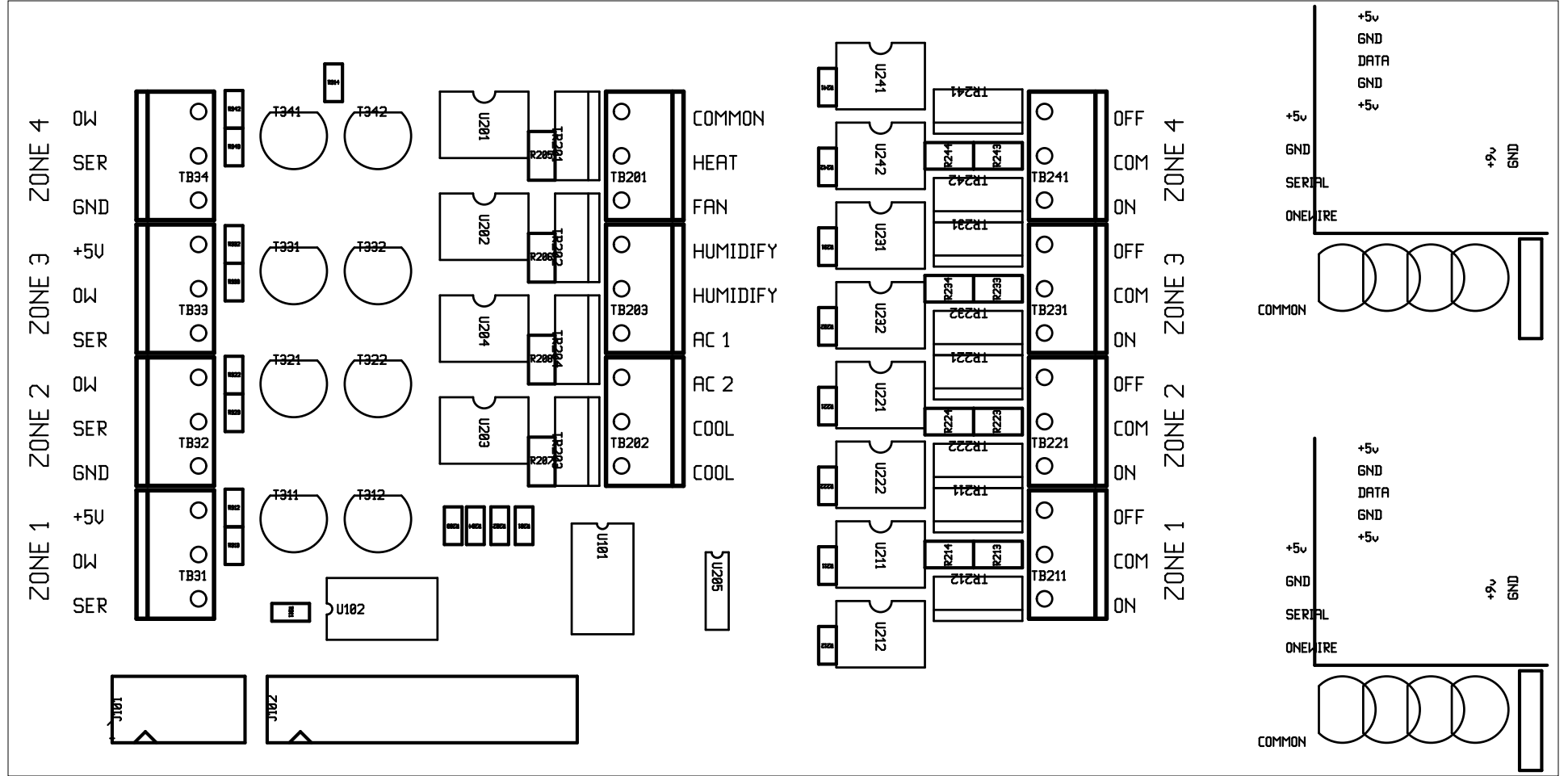


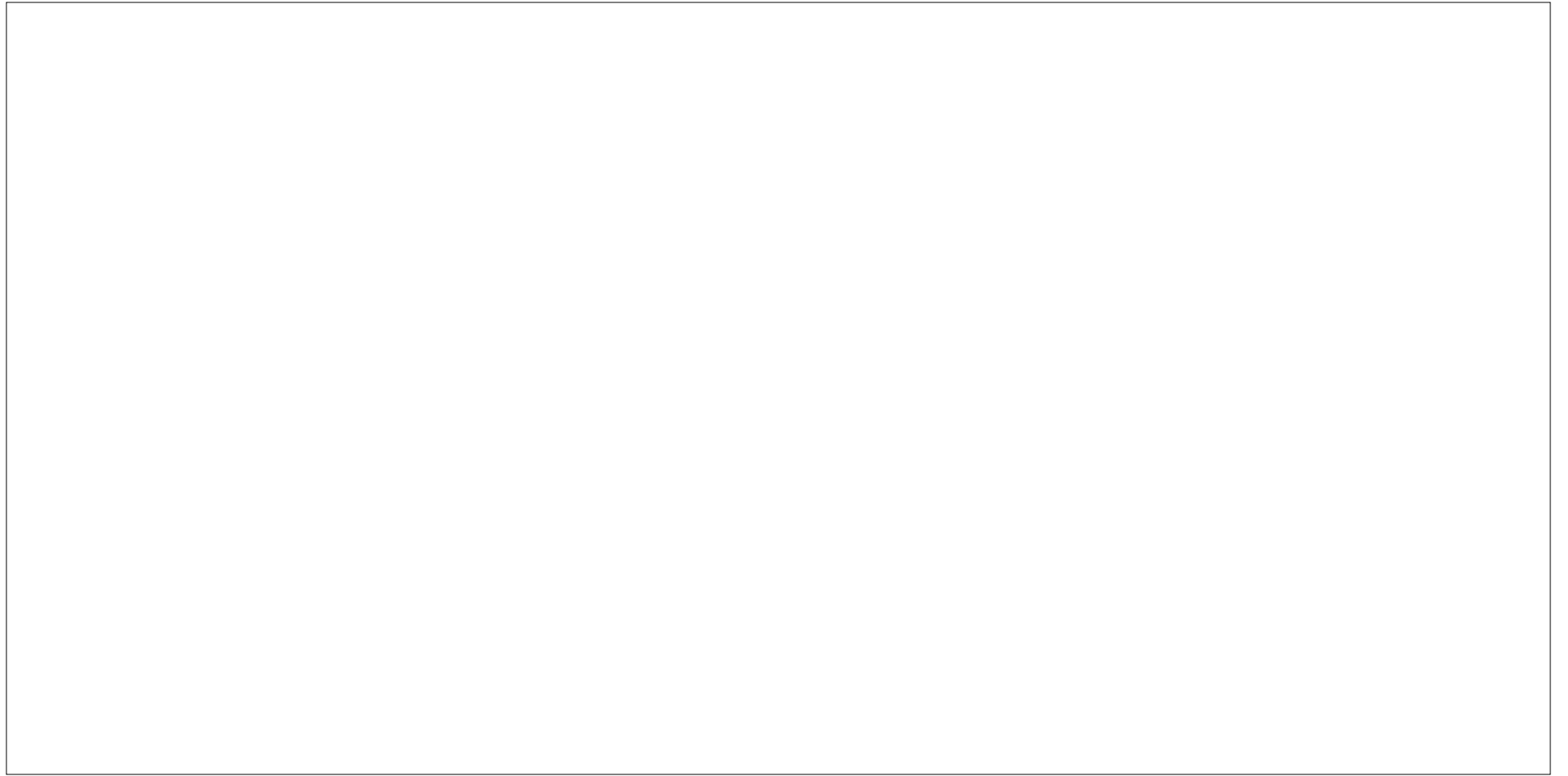


Layer drill



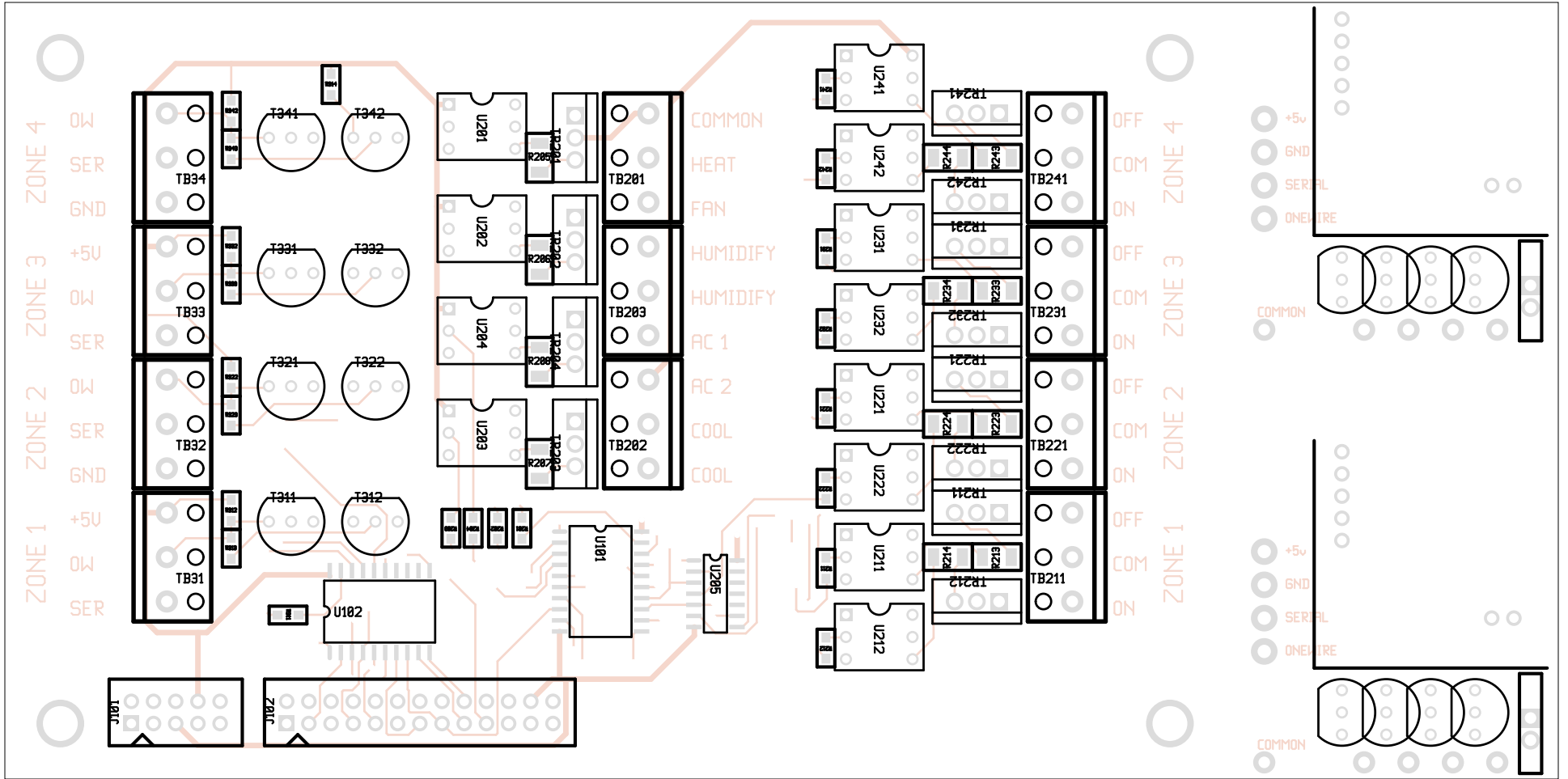
Layer topsilk

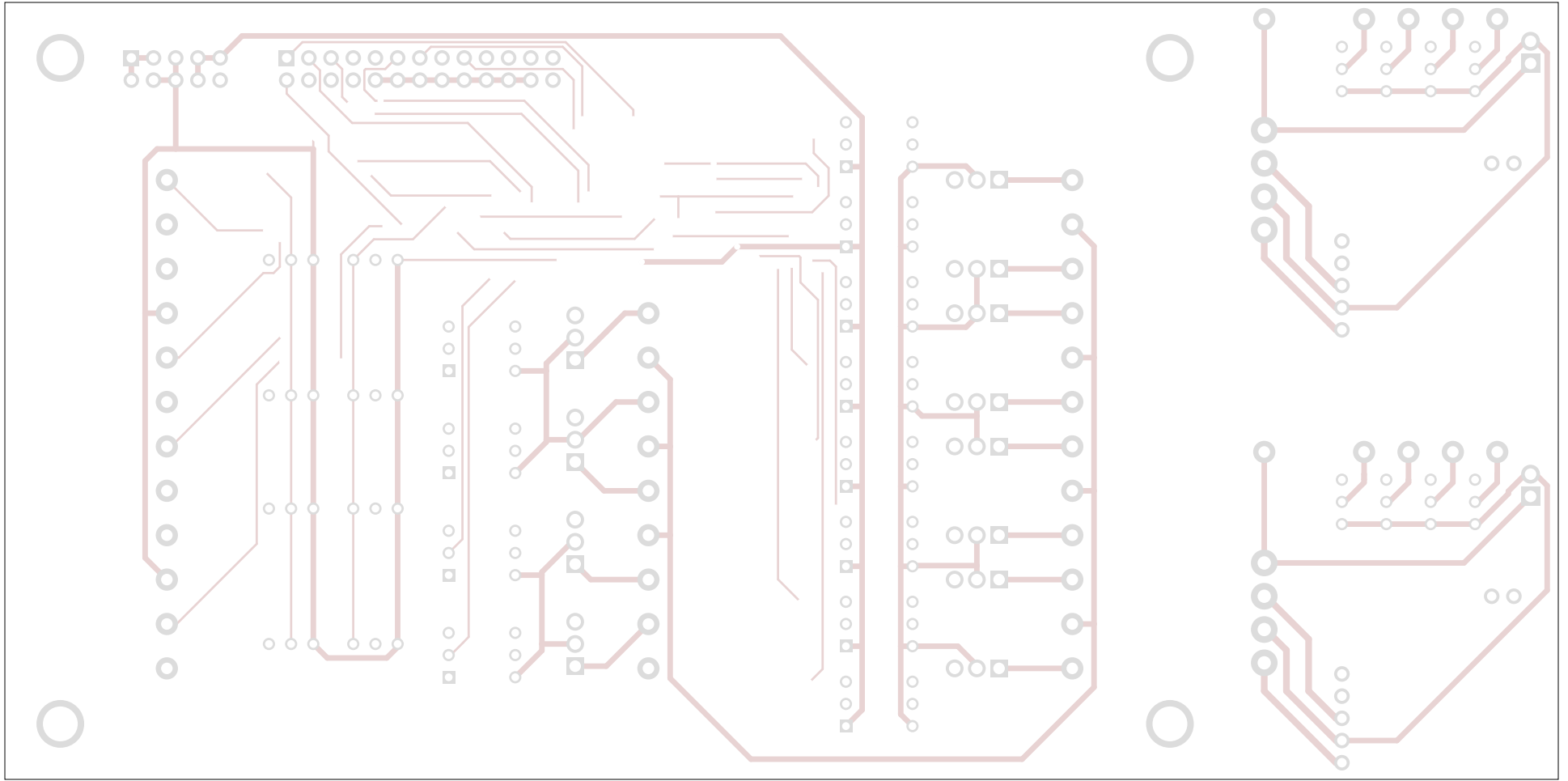




Галел рофтомалк

Layer topassembly



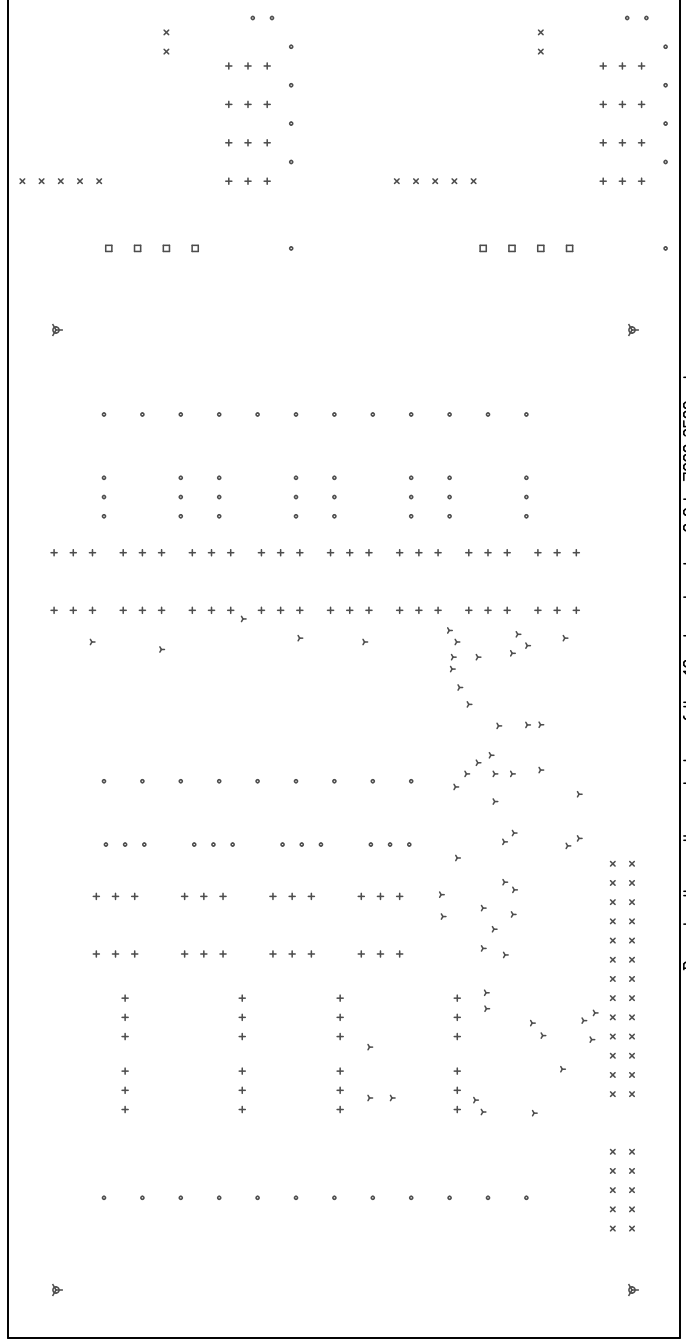


Галет потомасSEMBLY

There are 6 different drill sizes used in this layout, 321 holes total

Symbol	Diam. (Inch)	Count	Plated?
Y	0.028	56	YES
+	0.035	120	YES
x	0.043	50	YES
o	0.052	83	YES
□	0.060	8	YES
∇	0.157	4	YES

Title: control2 - Fabrication Drawing
 Author: DJ Delorie
 Date: Wed Mar 1 19:25:11 2006 UTC
 Maximum Dimensions: 7000 mils wide, 3500 mils high



Board outline is the centerline - 0.0 to 7000, 3500 mils